



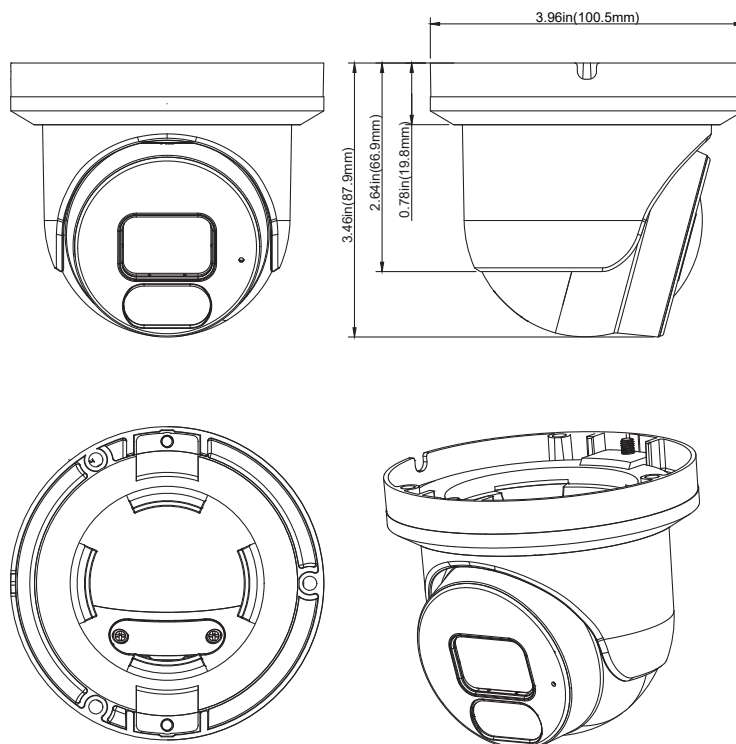
## AVC-NBE41F28

NDAA COMPLIANT | CE | FC

4MP DUAL LIGHT TURRET NETWORK CAMERA

### DIMENSIONS

Unit : inch(mm)



### OVERVIEW

- 4MP (2560x1440) @25fps H.265/ H.254
- Full Color / IR Mode
- 2.8mm Fixed Lens (F1.6)
- 3D DNR, D-WDR
- Dual Light: White Light LED / Infra Red LED
- Built-in MIC
- Built-in Micro SD card slot (up to 512GB)
- AI Feature : Pedestrian & Vehicle Detection, Intrusion Detection, Tripwire Counting, Loitering Detection, Region Entrance / Exiting Detection
- IP67 ingress protection
- PoE / DC12V Power supply
- Support remote monitoring by AVYCON ONE (Mobile APP) and AVYCON CMSONE (CMS)

### OPTIONAL ACCESSORIES



AVM-JB-BE-S2  
JUNCTION BOX



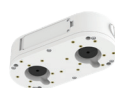
AVM-CWM-EV-S2  
COMPACT  
WALL MOUNT



AVM-HWM-E-S2  
WALL MOUNT  
WITH JUNCTION BOX



AVM-HCM-E-S2  
CEILING MOUNT  
WITH JUNCTION BOX



AVM-JB-DUAL-US1  
DUAL JUNCTION BOX



AVM-POM-A1  
POLE  
MOUNT BRACKET



AVM-CRM-A1  
CORNER  
MOUNT BRACKET

## SPECIFICATIONS

VIDEO	
Imaging Device	1/3"
Effective Pixels	4MP 2560(H)×1440(V)
Scanning System	Progressive CMOS
Min. Illumination	Color 0.004lux @ F1.6 (AGC ON) ; B/W 0 lux @ IR ON
LENS TYPE	
Focal Length (Zoom Ratio)	2.8mm Fixed
Max. Aperture Ratio	F No. 1.6
Angular Field of View	Horizontal: 95°, Vertical: 51°, Diagonal: 112°
Min. Object Distance	5.9ft(1.8m)
Lens Type	Fixed(M12)
OPERATIONAL	
IR LED	1
White Light	2
IR Viewable Length	Up to 82ft(25m)
White Light Viewable Length	Up to 65ft(20m)
Type of Complementary Light	Default white light, switchable infrared light
Motion Detection	Off/On (8 Level)
Wide Dynamic Range	DWDR
Digital Noise Reduction	3D DNR
Day & Night	Full Color (default) / Day&Night / Smart Illumination
White Balance	Auto/Manual
Electronic Shutter Speed	1/5 ~ 1/20000s
Edge Storage	Micro SD/SDHC/SDXC Slot (512GB)
Alarm I/O	N/A
Audio I/O	Built-in MIC
Hardware Reset	Yes
Smart Feature	Pedestrian & Vehicle Detection (SMD), Intrusion Detection (ID), Tripwire Counting (TC), Loitering Detection (LD), Region Entrance / Exiting Detection
NETWORK	
Ethernet	RJ45(10/100BASE-T)
Video Compression Format	H.265/H.264
Resolution	Main Stream@25fps : 4MP(2560x1440) Sub Stream@25fps : VGA(640x480)
Video Quality Adjustment	512Kbps ~ 4Mbps
Bitrate Control Method	CBR/VBR
IP	IPv4
Protocol	TCP/IP, HTTP, DHCP, DNS, DDNS, RTP/RTSP,SMTP, NTP, HTTPS
Application Programming Interface	ONVIF, REST API
Web Viewer	IE10,11
ENVIRONMENTAL	
Operating Conditions	-31~140F(-35~+60°C/less than < 90% RH
Ingress Protection	IP67
ELECTRICAL	
Input Voltage / Current	D12V/PoE(IEEE802.3af)
Power Consumption	DC12V: max 5.05W ; PoE(48V): max 6.1W
MECHANICAL	
Material	Metal
Dimensions (HxWxD)	3.96 x 3.46in (100.5 x 87.9mm)
Weight	0.92lbs (420.1g)